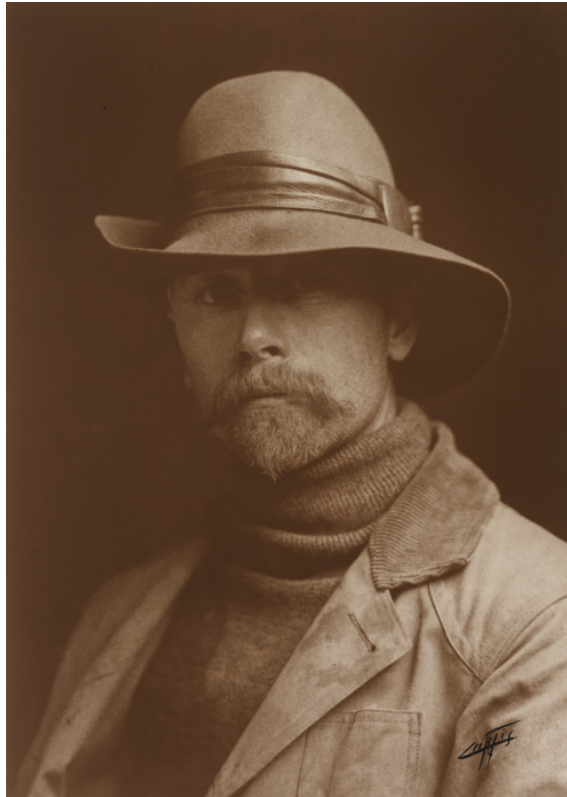


The National Portrait Gallery presents

FACES OF THE FRONTIER

Photographic Portraits from the American West, 1845–1924



Exhibition runs through January 24, 2010

Reel Portraits Film Screenings: Friday, November 20,
and Saturday, November 21

Free and open to the public

The National Portrait Gallery
Donald W. Reynolds Center for American Art and Portraiture
Eighth and G Streets, NW, Washington, DC
Metro: Gallery Place/Chinatown • Open 11:30 a.m.–7:00 p.m. • npg.si.edu

The National Portrait Gallery's exhibition "Faces of the Frontier: Photographic Portraits from the American West, 1845–1924," explores how the West was dramatically reconstituted during the eighty years between the Mexican War and the passage of the Indian Citizenship Act in 1924.

Reel Portraits: John Ford's Frontier

John Ford's films helped shape America's memory and imagination of the West. Ford also helped create an indelible portrait of the American cowboy in the form of John Wayne. See the West—and westerns—afew, as the National Portrait Gallery presents "Reel Portraits: John Ford's Frontier."

Friday, November 20, at 7:00 p.m.: *Fort Apache* (1948). The first film in Ford's "cavalry trilogy," *Fort Apache* stars John Wayne, Henry Fonda, and Shirley Temple in a veiled account of Custer's "last stand." The film marked Ford's return to westerns, and to commercial success. A conversation with NPG curator Frank H. Goodyear III follows the screening.

Saturday, November 21, at 2:00 p.m.: *She Wore a Yellow Ribbon* (1949). On the verge of retirement, Nathan Brittles (John Wayne) tries to avert another war with Native Americans. With Oscar-winning color cinematography by Winton Hoch. Introduced by historian Francis Flavin from the Office of the Assistant Secretary of Indian Affairs, Department of the Interior.

Saturday, November 21, at 5:00 p.m.: *The Searchers* (1956). Civil War veteran Ethan Edwards (John Wayne) hunts for the Comanche who killed his family and kidnapped his niece (Natalie Wood). A conversation with Francis Flavin and Frank H. Goodyear III follows the screening.

Program support comes from the Reed Foundation, Inc.



Smithsonian
Donald W. Reynolds Center for
American Art and Portraiture
National Portrait Gallery